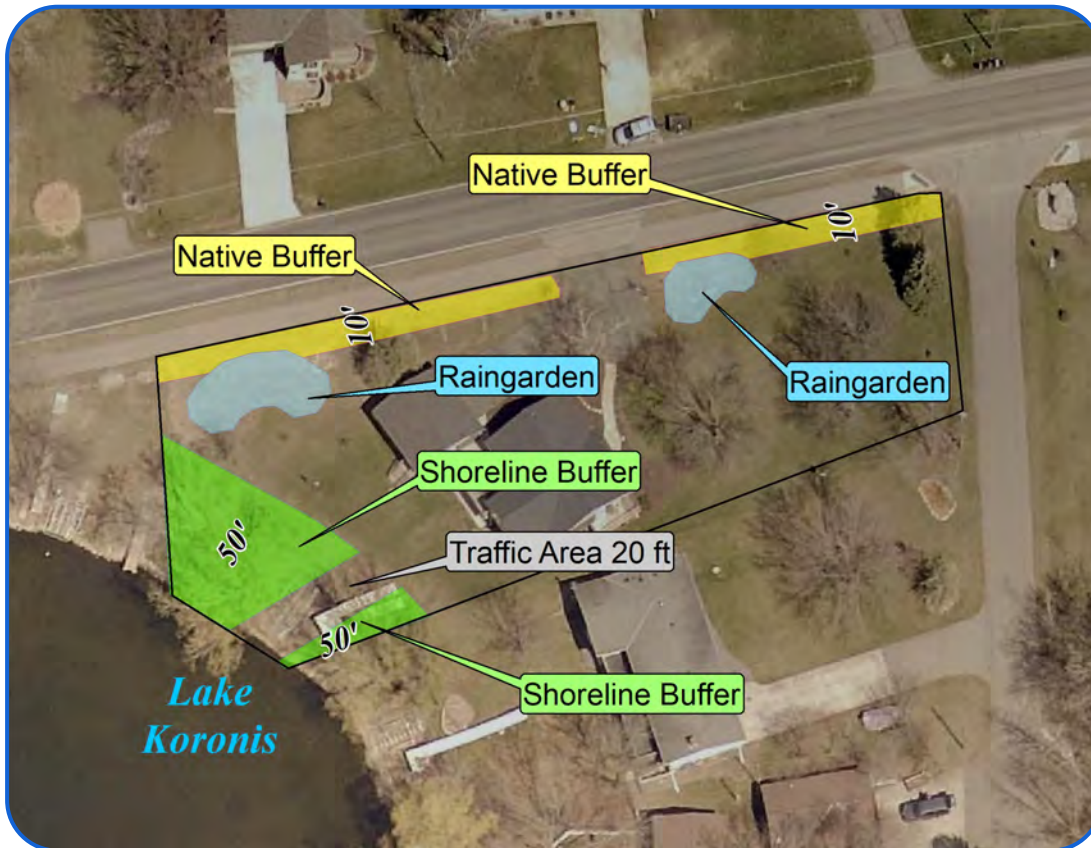


Shoreline Restoration & Stormwater Infiltration Project

2016 Lake Koronis



Practice:

Shoreline Restoration
Stormwater Infiltration

Target Waters:

Lake Koronis

Year Constructed:

2016

Components:

- Soil Amendments
- Native Vegetation
- Maintenance Contract
- Retaining Wall Removal

Benefits:

- Erosion Control
- Water Infiltration & Runoff Control
- Sediment & Nutrient Reduction
- Fish & Wildlife Habitat

Partners:

- Landowner
- Stearns County SWCD
- MPCA

Watershed:

North Fork Crow River

Project Description: This project incorporates a 50-foot-wide shoreline restoration with multiple infiltration practices that treat water off the adjacent roads, building sites and trail. With the topography and water flow in the immediate area, the property is in an ideal location to intercept the water runoff within the watershed going into Lake Koronis.

Pollution Reduction Estimates:

Phosphorus	1.2	Lbs/Yr
Sediment	121	Tons/Yr



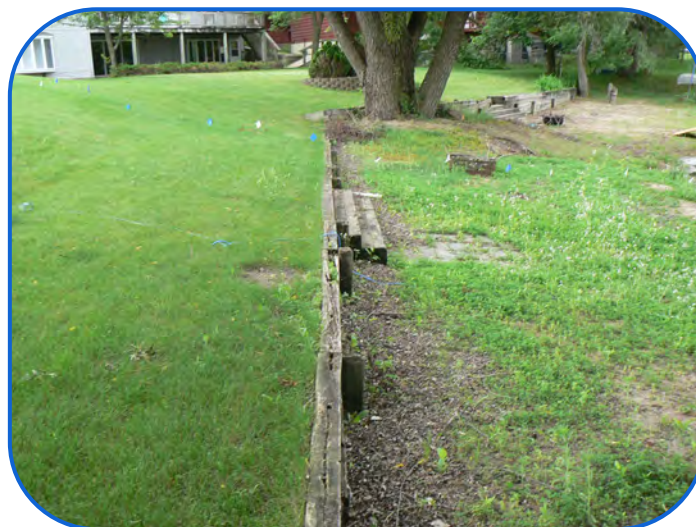
Shoreline Restoration & Stormwater Infiltration Project

2016 Lake Koronis



Infiltration Area Prior To Project

"The landowners implemented a combination of practices to treat the runoff within the immediate watershed. The project is a showcase along the lake, roads and adjacent trail."— Greg Berg, Stearns County SWCD Lakeshed Specialist



Shoreline Area Prior To Restoration



Infiltration Area After Project Completion



Infiltration Area After Project Completion



After Shoreline Restoration

Funding :

State Funds*	\$	25,425
Landowner Investment	\$	8,428

* Administered by Stearns SWCD – MPCA CWP